



COUNTRY WOODS

AT THE COLONY PRESERVE





WELCOME TO...COUNTRY WOODS At The Colony Preserve

Your brand new home at Country Woods at The Colony Preserve has been thoughtfully designed and crafted to offer upscale luxury and style, as well as the most extraordinary values Long Island has seen in years!

Six distinctive designs, offering ranch and two-story home plans. You'll enjoy three to six bedrooms and two and up to four and one-half baths. Master suites are particularly spacious, with his and hers walk-in closets, as well as master

baths with twin sinks and separate showers and tubs. The designer kitchens are equipped with deluxe stainless steel appliances, granite countertops and beautiful



cabinetry. The entry foyers offer a welcoming sense of arrival, and the open space and comfort continues with nine-foot ceilings throughout the first floor. Each home provides a two-car garage, covered entry porch, attractive landscaping and a long list of other standard features.

Your home at The Colony Preserve has been created by the family owned Holiday Organization, a long-established Long Island builder renowned for quality, innovative design and enduring value. Here, Holiday has taken special interest to site your new home in a unique neighborhood. Look at the site plan on the opposite page, and you'll see how much open space will surround you. The Colony Preserve is sited on 205 acres, with over 98 acres dedicated to the town of Brookhaven for parkland; over half of the remaining acreage will remain open field to ensure appealing vistas of the unspoiled pond, fields and woods.

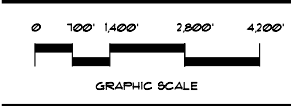
Country Woods at The Colony Preserve. The more you look, the more you will appreciate that Long Island hasn't seen a new community like this in a generation. Welcome home!



Master Plan



COUNTRY WOODS AT THE COLONY PRESERVE



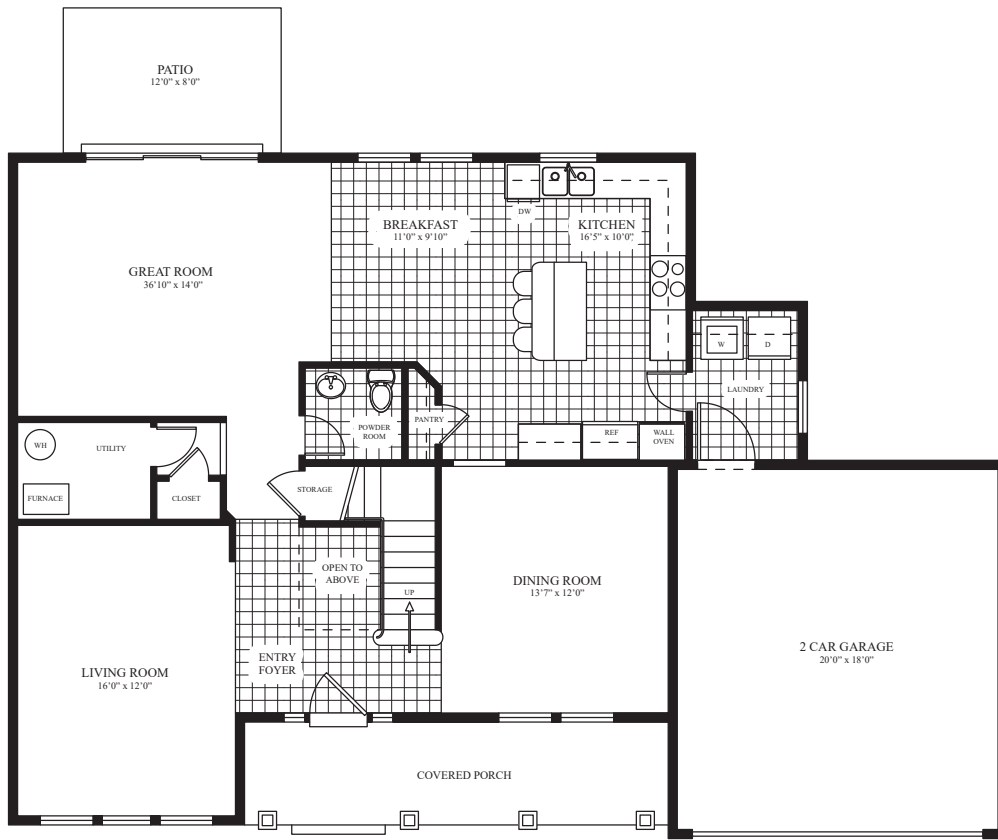


Artist's concept



THE CHATHAM II

THE CHATHAM II

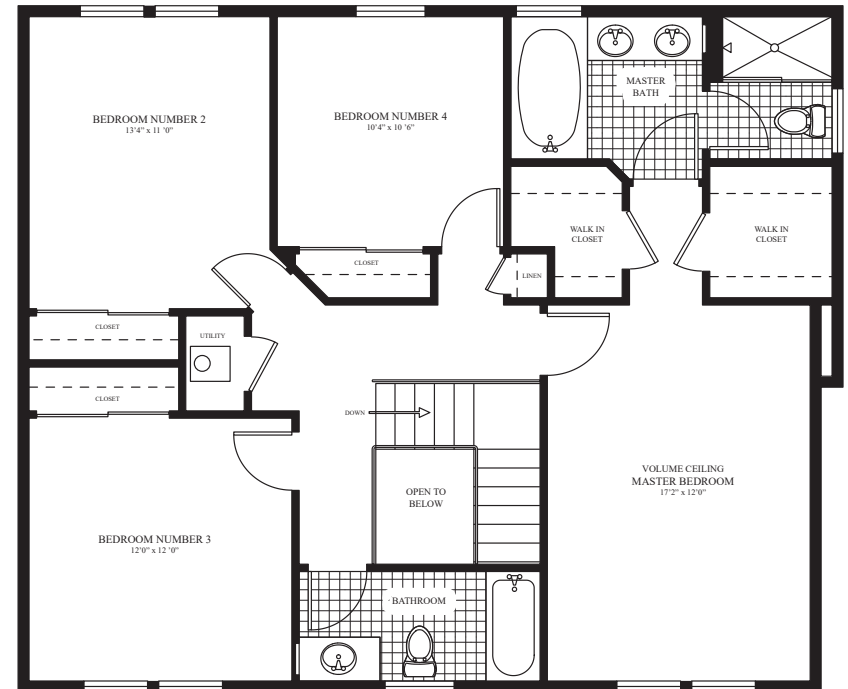


FIRST FLOOR

4 BEDROOMS, GREAT ROOM/DEN
2 1/2 BATHROOMS, 2-CAR GARAGE

LIVING SPACE

1ST FLOOR AREA 1,324 SQ.FT.
2ND FLOOR AREA 1,166 SQ.FT.
TOTAL LIVING AREA 2,490 SQ.FT.
GARAGE AREA 378 SQ.FT.
COVERED PORCH 132 SQ.FT.
TOTAL AREA 3,000 SQ.FT.



SECOND FLOOR

Floorplans and renderings are artist's concept. Room dimensions are approximate. Prices, terms, square footage and features are approximate and subject to change without notice.

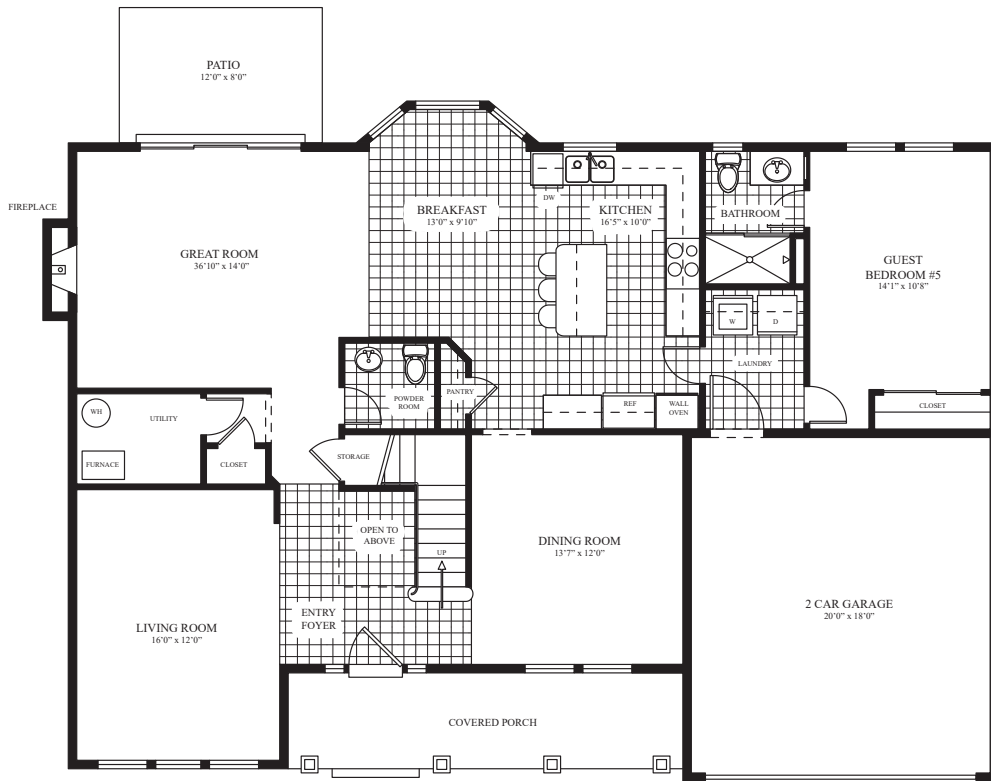


Artist's concept



THE CHATHAM II GRAND

THE CHATHAM II GRAND



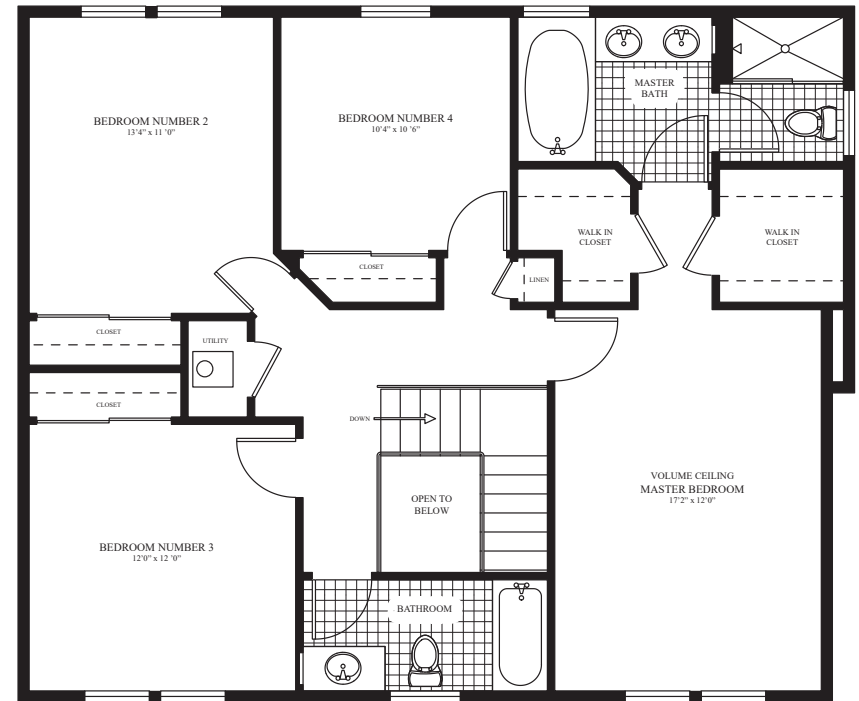
FIRST FLOOR

5 BEDROOMS, GREAT ROOM/DEN
 3 1/2 BATHROOMS, 2-CAR GARAGE
 OPTIONAL 3 CAR GARAGE Available on Most Lots

Floorplans and renderings are artist's concept. Room dimensions are approximate. Prices, terms, square footage and features are approximate and subject to change without notice.

LIVING SPACE

1ST FLOOR AREA1,540 SQ.FT.
 2ND FLOOR AREA 1,166 SQ.FT.
 TOTAL LIVING AREA 2,706 SQ.FT.
 GARAGE AREA378 SQ.FT.
 COVERED PORCH132 SQ.FT.
 TOTAL AREA 3,216 SQ.FT.



SECOND FLOOR



Artist's concept



GALLERIA II

THE GALLERIA II

3 OR 4 BEDROOMS, GREAT ROOM/DEN
2 1/2 BATHROOMS, 2-CAR GARAGE

LIVING SPACE

TOTAL A/C 2,301 SQ. FT.
GARAGE AREA 480 SQ. FT.
COVERED PORCH 44 SQ. FT.
COVERED PATIO 99 SQ. FT.
TOTAL AREA 2,924 SQ. FT.



Floorplans and renderings are artist's concept. Room dimensions are approximate. Prices, terms, square footage and features are approximate and subject to change without notice.

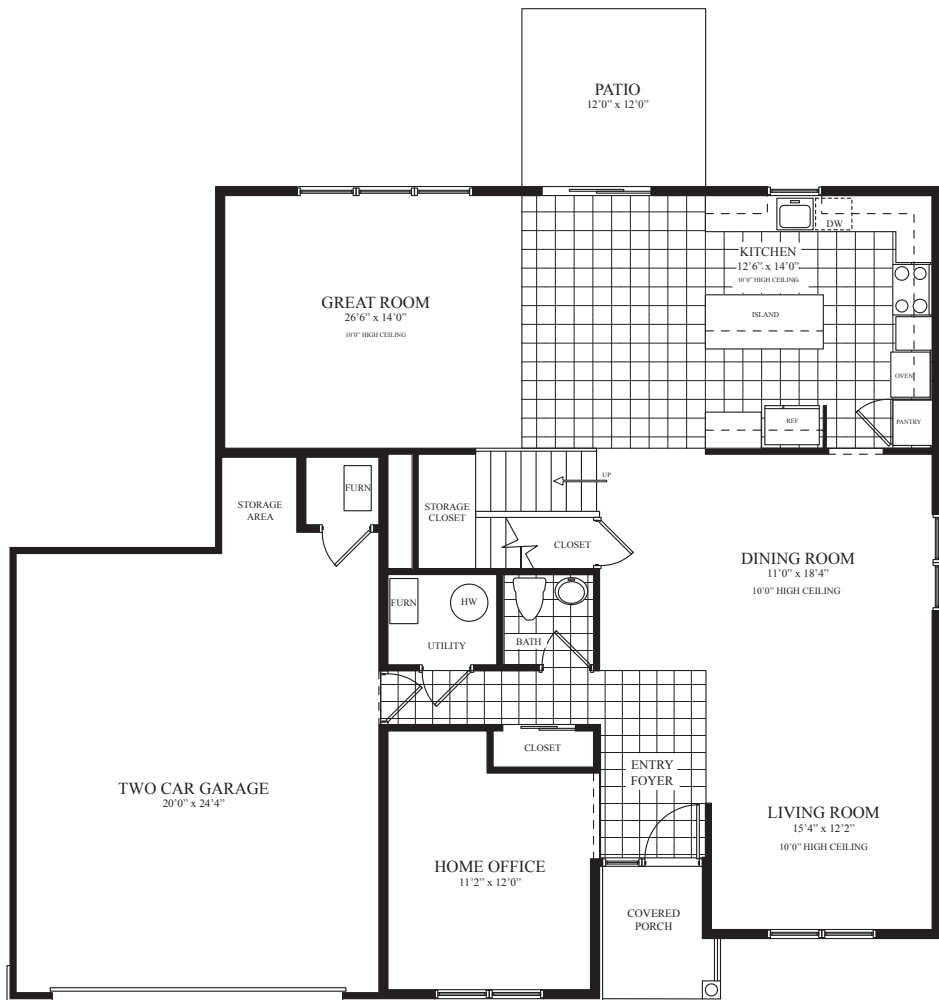


Artist's concept



HAMPTON II

THE HAMPTON II



FIRST FLOOR

4 OR 5 BEDROOMS, GREAT ROOM/LOFT

OR BEDROOM 5

2 1/2 OR 3 1/2 BATHROOMS, 2-CAR GARAGE

Floorplans and renderings are artist's concept. Room dimensions are approximate. Prices, terms, square footage and features are approximate and subject to change without notice.

LIVING SPACE

1ST FLOOR AREA 1,997 SQ.FT.

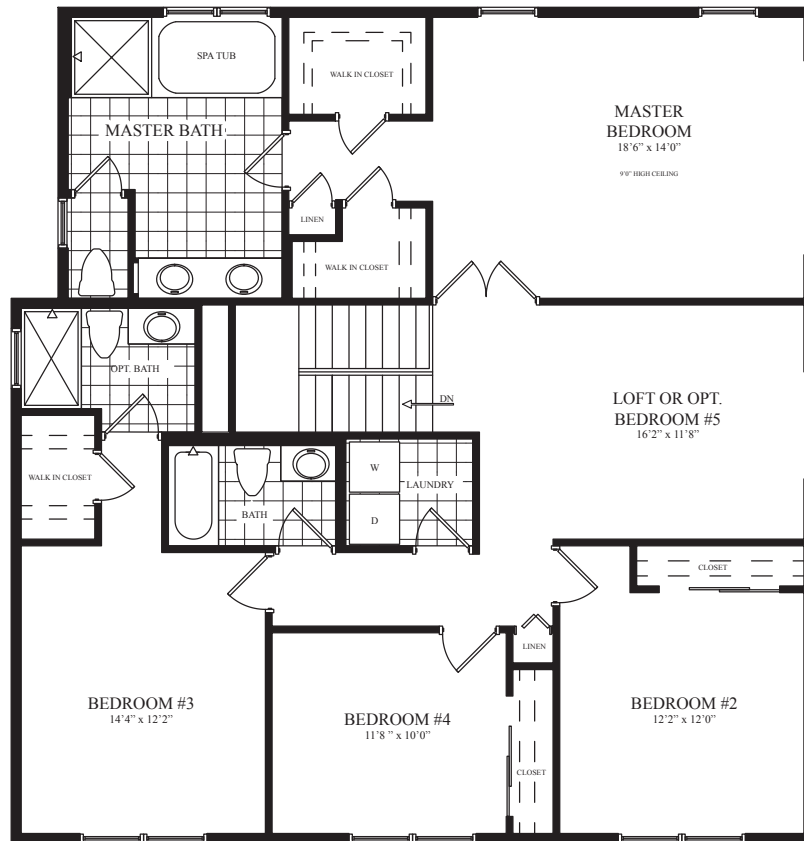
2ND FLOOR AREA 1,632 SQ.FT.

TOTAL LIVING AREA 3,629 SQ.FT.

GARAGE AREA 553 SQ.FT.

COVERED PORCH 45 SQ.FT.

TOTAL AREA 4,227 SQ.FT.



SECOND FLOOR



*Artist's concept
(Shown with Optional 3rd Car Garage)*



HAMPTON II GRAND

THE HAMPTON II GRAND



FIRST FLOOR

5 OR 6 BEDROOMS, GREAT ROOM/LOFT OR BEDROOM 6

4 1/2 BATHROOMS, 2-CAR GARAGE

3 CAR GARAGE Available on Most Lots

Floorplans and renderings are artist's concept. Room dimensions are approximate. Prices, terms, square footage and features are approximate and subject to change without notice.

LIVING SPACE

1ST FLOOR AREA 2,224 SQ.FT.

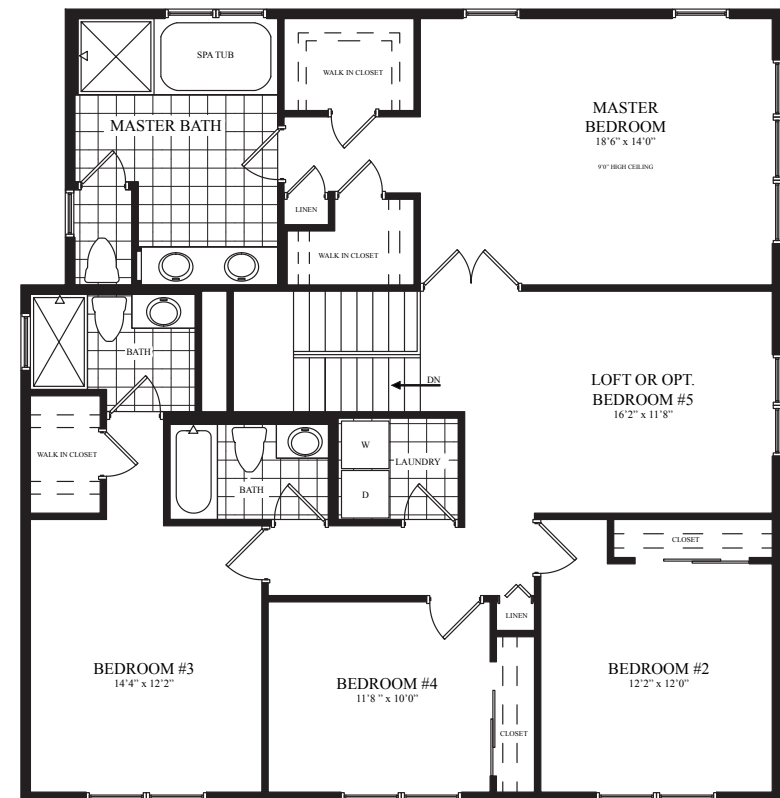
2ND FLOOR AREA 1,632 SQ.FT.

TOTAL LIVING AREA 3,856 SQ.FT.

GARAGE AREA 510 SQ.FT.

COVERED PORCH 45 SQ.FT.

TOTAL AREA 4,411 SQ.FT.



SECOND FLOOR



STANDARD FEATURES

- Entry foyer with ceramic tiled floor
- Formal living room and dining room (or great room)
- Nine-foot ceiling heights on first floor
- Super-sized kitchen/great rooms (not available in East Hampton II)
- Quality Kitchens featuring:
 - Kitchen Kraft cabinets in your choice of Maple door Shaker or Traditional style with 36" wall cabinets (42" wall cabinets available)
 - Ceramic tile floors
 - Granite countertops
 - Stainless steel sink with Moen® faucet with spray
- General Electric stainless steel appliances including:
 - Built-in electric glass-cooktop, wall oven with microwave (East Hampton II model includes: GE free-standing oven range with a glass cooktop, and separate microwave hood)
 - 25 cu. ft. side-by-side frost-free refrigerator/freezer with ice and water
 - Dishwasher
- Primary bedroom suites with separate his-and-hers walk-in closets
- Luxurious primary bath features separate stall shower with glass door, ceramic wall surround, separate tub, ceramic floor, maple door vanities, wall mirror, built-in medicine cabinet, Sterling by Kohler water closet and cultured marble top with double lavatory and Moen® faucets
- Hall bath features ceramic tile floor and tub wall surrounds, vanity with wall mirror, built-in medicine cabinet, Sterling by Kohler Vykrel tub and toilet and cultured marble top Moen® faucet
- Powder room with Sterling by Kohler pedestal sink and toilet, framed mirror, and ceramic floor (not available in East Hampton II)
- Moen® faucets
- Vinyl coated wire shelving in closets
- Plush wall-to-wall carpeting
- Rounded wall corner beads
- Two-coat interior white wall paint, two-coat white semi-gloss interior trim and door paint
- Two panel interior doors with lever hardware
- Insulated fiberglass entry door, entry hardware and deadlock, decorative entrance light fixtures and electric door chime
- Laundry room with General Electric washer and dryer, wall cabinets, ceramic tile floor
- ENERGY STAR® 90% efficiency gas-fired warm air heat with 14 SEER central air conditioning
- Two-car garage with insulated garage door, automatic garage door opener, and convenient interior access (optional 3-car garage available on most lots)
- Hose bib in garage and rear yard
- Smoke detectors
- Pre-wired telephone in kitchen, great room, and master bedroom
- Pre-wired TV in great room and master bedroom
- 150 amp electric service
- White switches and receptacles
- 50 gallon gas fired water heater
- Silverline tilt single hung vinyl windows with integral grills and screens
- ENERGY STAR® R-49 ceiling insulation and R-19 wall insulation
- Leaders and gutters
- Asphalt driveway
- Concrete entry walk and 12' x 12' patio
- Underground lawn sprinkler

- Complete landscaping with sodded front lawn, seeded rear and side yards, trees and shrubbery per landscape plans
- Exteriors featuring vinyl siding, vinyl fascia and soffits with cultured stone
- Tamko 30-year architectural roof shingles
- Decorative interior lighting fixtures





AT THE GATEWAY TO THE EAST END



-  Vineyards/Winery
-  Shopping/Retail
-  Golf Course/Country Club
-  Airports/Transportation/Industry
-  Parks/Recreation
-  Hospitals/Medical
-  Dining/Restaurants
-  Public Beaches